

**ITEM 30. PARKING – DISABILITY PARKING ONLY – MOUNT STREET  
PYRMONT**

**TRIM RECORD NO: 2017/106963**

**RECOMMENDATION**

It is recommended that the Committee endorse the reallocation of parking on the eastern side of Mount Street, Pyrmont, between the points 23.4 metres and 31.2 metres, south of John Street as “Disability Parking Only”.

**VOTING MEMBERS FOR THIS ITEM**

<b><i>Voting Members</i></b>	<b><i>Support</i></b>	<b><i>Object</i></b>
City of Sydney		
Roads and Maritime Services		
NSW Police – Sydney City LAC		
Representative for the Member for Sydney		

**DECISION**

**BACKGROUND**

A visitor to the Pyrmont Community Centre have requested for a disability parking space outside the Centre. The visitor has advised they are not in a wheelchair but cannot physically walk far.

**COMMENTS**

Mount Street, Pyrmont, south of John Street, is designated for two-way traffic flow with an approximate width of 5.6 metres. The road and footway grades are relatively flat adjacent to this proposed space.

The kerb space outside the Pyrmont Community Centre on the eastern side of Mount Street is currently signposted as “No Parking Authorised Council Vehicles Only”.

Under existing conditions, vehicles park on the eastern side of the street which reduces the trafficable lane for two-way traffic flow to an approximate width of 3.3 metres. The remaining width is allocated for on-street parking.

Footpaths (approximately 2.5 metres wide) are provided on the eastern side of the street.

The Australian Standard for on-street disability parking (AS 2890.6 – 2009) requires the provision of a 3.2 metre wide by 7.8 metre long bay.

A 7.8 metre long bay is proposed however with consideration for the constrained width of Mount Street, the 3.2 metre bay width cannot be accommodated either within the carriageway or the adjacent footpath. However as Mount Street is designated for two-way traffic flow and has very low traffic volumes, low vehicle speed and only provides local access then the requested disability space can be provided with reduced dimensions.

Although the visitor to the Pymont Community Centre is not wheelchair-bound and kerb ramps are not necessary, the City will investigate installing ramps at this site should the proposal be endorsed.

**CONSULTATION**

The City consulted local residents and businesses in the area. There were 99 letters sent out with the Pymont Community Centre supporting the proposal and one response opposing the proposal requesting for more parking to be allocated to permit holders.

**FINANCIAL**

Funds are available in the current budget.

**ATTACHMENTS**

Parking – Disability Parking Only – Mount Street Pymont

Ganesh Vengadasalam, Senior Traffic Engineer



**Existing**  
No Stopping



**Existing**  
1P Ticket  
9am-9pm  
Permit Holders Excepted  
Area 20

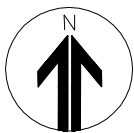


**Proposed**  
Disability Parking  
Only



**Existing**  
No Parking  
Authorised Council  
Vehicles Excepted

Source: Dekho (March 2017)



## PROPOSAL

PROPOSED DISABILITY PARKING  
MOUNT STREET, PYRMONT

